



MONTHLY MEMBERSHIP PROGRESS REPORT

District 323 H1

Results as of: 5/31/2017

GMT: KAMLESH JAIN

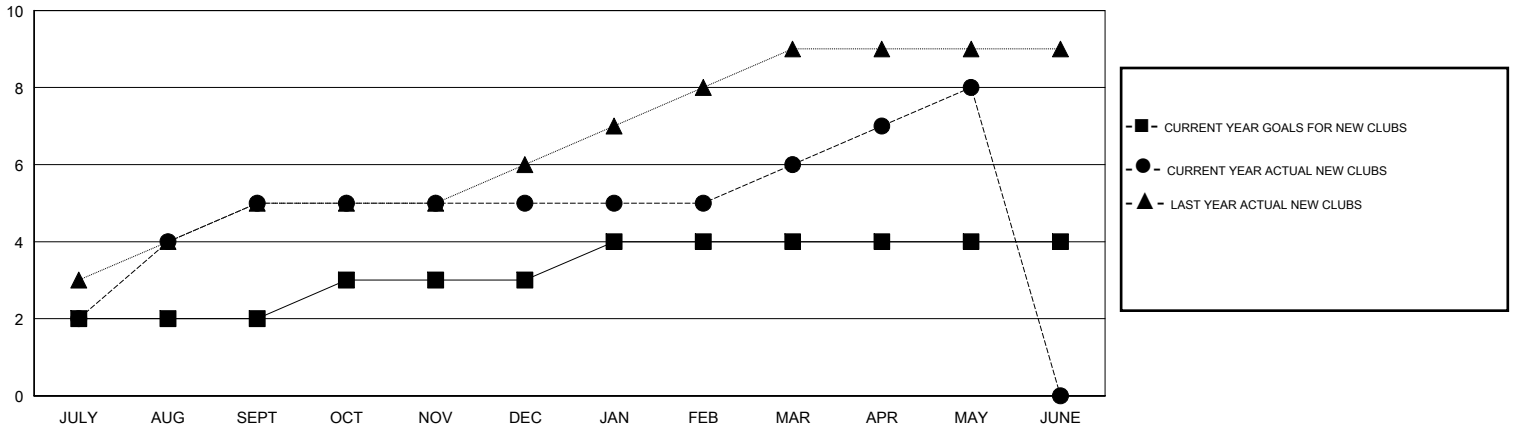
LOCATION INDIA

GMT CA

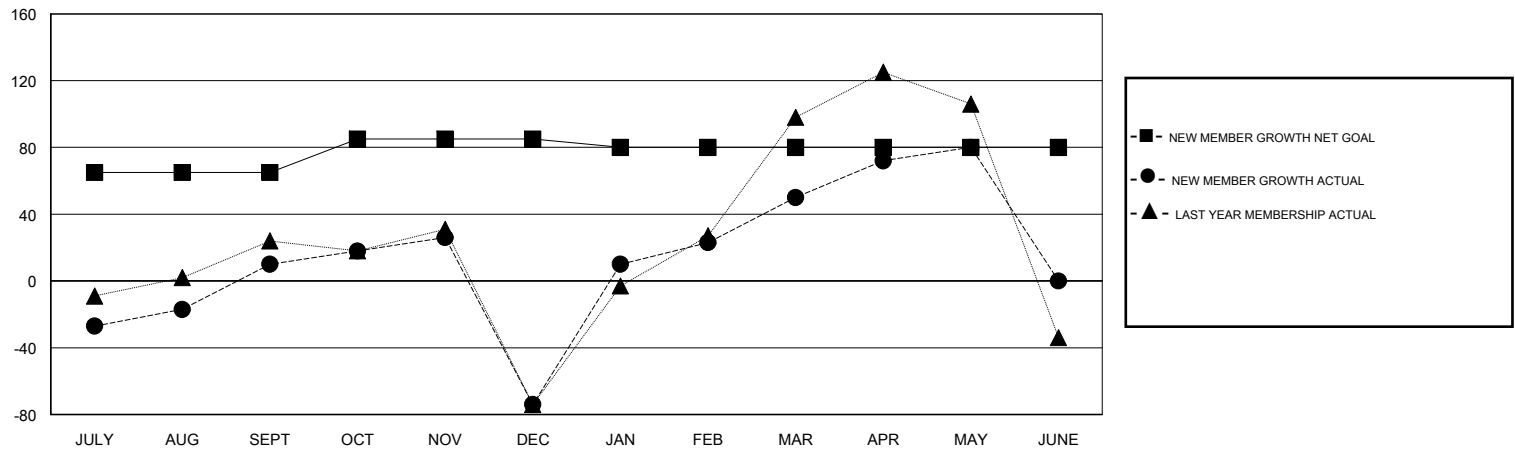
Clubs			
RESULTS FOR 2016-2017			
QUARTER	NEW CLUB GOAL	NEW CLUBS	DROPPED CLUBS
JULY/AUG/SEPT	2	5	2
OCT/NOV/DEC	1	0	5
JAN/FEB/MAR	1	1	0
APR/MAY/JUNE	0	2	0

Members			
RESULTS FOR 2016-2017			
QUARTER	NEW MEMBER GROWTH NET GOAL (not reinstated or transfers)	NEW MEMBER GROWTH ACTUAL (not reinstated or transfers)	DROPPED MEMBERS ACTUAL (including transfers)
JULY/AUG/SEPT	65	197	187
OCT/NOV/DEC	20	36	120
JAN/FEB/MAR	-5	159	35
APR/MAY/JUNE	0	88	58

GOALS AND ACTUAL NEW CLUBS CUMULATIVE



GOALS AND ACTUAL MEMBERS CUMULATIVE



DROPPED CLUBS: 7	58 CLUBS OF 85 ADDED 1 OR MORE NEW MEMBERS	<u>GENDER DISTRIBUTION</u>	
DROPPED MEMBERS		MALE	1,949 (70.31%)
DECEASED	CLICK HERE FOR CUMULATIVE MEMBERSHIP DATA	FEMALE	823 (29.69%)
CLUB CANCELLED		TOTAL FAMILY UNIT MEMBERS	1,483
OTHER		FAMILY MEMBERS PAYING HALF DUES	771
TOTAL		400	